

[www.kent.ac.uk/50festival](http://www.kent.ac.uk/50festival)

  #50Fest /unikent50

University of  
**Kent**

**50**

1962-2012  
THE UK'S  
EUROPEAN  
UNIVERSITY



**50**  
**FESTIVAL**  
**4-6 SEPTEMBER 2015**

**PROGRAMME OF EVENTS**



## CHANCELLOR'S WELCOME

I am delighted to welcome you to the University of Kent for our special 50th anniversary festival. I hope you enjoy the weekend!

To all our alumni and former staff, welcome home. To our local community, thank you for joining us.

This year, we have taken pride in our past, celebrated our achievements and looked to the next 50 years. Thank you for sharing in our journey.

You will always be welcome at Kent.

**Gavin Esler** (Rutherford 1971), Chancellor





# YOU'VE ARRIVED!

## Share your photos!



#50Fest



/unikent50

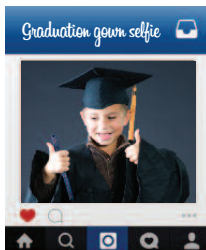
## Get online

Find **\_TheCloud**  
in your list of available  
WiFi networks and select it.

Log in, or register  
if you're a first time user.

Our staff will be around to help throughout the weekend – you can't miss them in their blue t-shirts!

## Memory snapshot



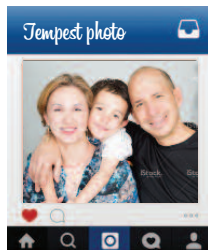
*Saturday 10.00-17.00,  
Senate lawn*

Take pics of your friends and children wearing University robes.



*Saturday 10.00-17.00,  
Senate lawn*

Create memorable photos with your friends and family.



*Saturday 10.00-18.00  
Darwin Board Room*

Professional photographers are on hand for family portraits.





# OUR HISTORY

## History Projects exhibition

Exhibitions featuring artefacts, memorabilia and memories collected by our 50th anniversary History Projects team and curated by students.  
All weekend 10.00-18.00 Central marquee

## Eliot gallery

An exhibition celebrating the history of the University of Kent, featuring important works of art, sculpture, photographs, silverware, posters, TS Eliot first editions, and unique documents from Eliot College's archives. The exhibition will also feature treasures from the University Archive – curated and led by University Archivist Ann MacDonald.

10.00-16.00 (Friday and Saturday)

10.00-14.00 (Sunday) Eliot Senior Common Room

## 1965 college bedroom

Come to the exhibition in Eliot College and see a student bedroom, 1960s style!

10.00-16.00 (Friday and Saturday)

10.00-14.00 (Sunday) Eliot College

## Interactive Wall

Official opening of the Student Media Centre Interactive Wall and media alumni reunion.

Saturday 14.00 Student Media Centre





# MEMORABILIA

Our full 50th anniversary merchandise range will be available throughout the 50th Festival weekend from the merchandise stall in Jarman Plaza (outside the campus shop – Essentials).

Alternatively you can order online: [www.kent.ac.uk/50/celebrate/souvenirs](http://www.kent.ac.uk/50/celebrate/souvenirs)



50

50

50  
FESTIVAL

50

50

50  
FESTIVAL

50

## EXPLORE THE CAMPUS

### Library tours

Fri 12.00-16.00  
Sat 10.00-16.00  
Sun 10.00-16.00

### Campus tours

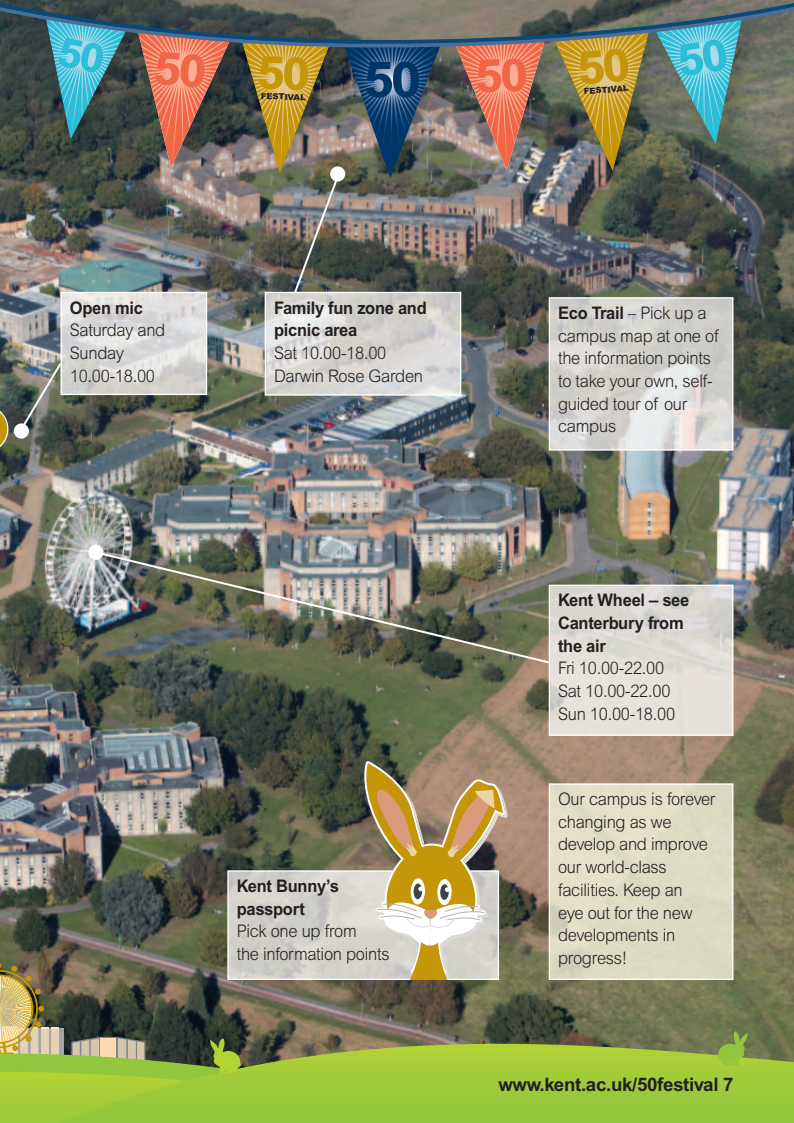
All weekend,  
10.00-16.00

### Student Media Centre open house

Visit the home of Inquire, CSR FM and KTV. The centre's Interactive Wall will be officially opened at 14.00 on Saturday. Sat and Sun 10.00-18.00 Student Media Centre, above The Venue

### University memorabilia

Head to our stall outside the campus shop to see the 50th anniversary merchandise range!  
Fri 12.00-18.00  
Sat 10.00-18.00  
Sun 10.00-18.00



**Open mic**

Saturday and  
Sunday  
10.00-18.00

**Family fun zone and  
picnic area**

Sat 10.00-18.00  
Darwin Rose Garden

**Eco Trail** – Pick up a  
campus map at one of  
the information points  
to take your own, self-  
guided tour of our  
campus

**Kent Wheel – see  
Canterbury from  
the air**

Fri 10.00-22.00  
Sat 10.00-22.00  
Sun 10.00-18.00

**Kent Bunny's  
passport**

Pick one up from  
the information points



Our campus is forever  
changing as we  
develop and improve  
our world-class  
facilities. Keep an  
eye out for the new  
developments in  
progress!



# RIDE THE KENT WHEEL

 /unikent50

 @unikent50

Share your photos with us using #50Fest

## Tickets available at the gate:

|   |     |
|---|-----|
| University of Kent students/Under 12s                   | £3  |
| University of Kent staff/<br>My Canterbury card holders | £4  |
| Full price ticket                                       | £5  |
| Family ticket (2 adults, 2 children under 12)           | £12 |

## Opening times:

Fri, Sat 10.00-22.00

Sun 10.00-18.00







50

50  
FESTIVAL

50

50  
FESTIVAL

50

50  
FESTIVAL

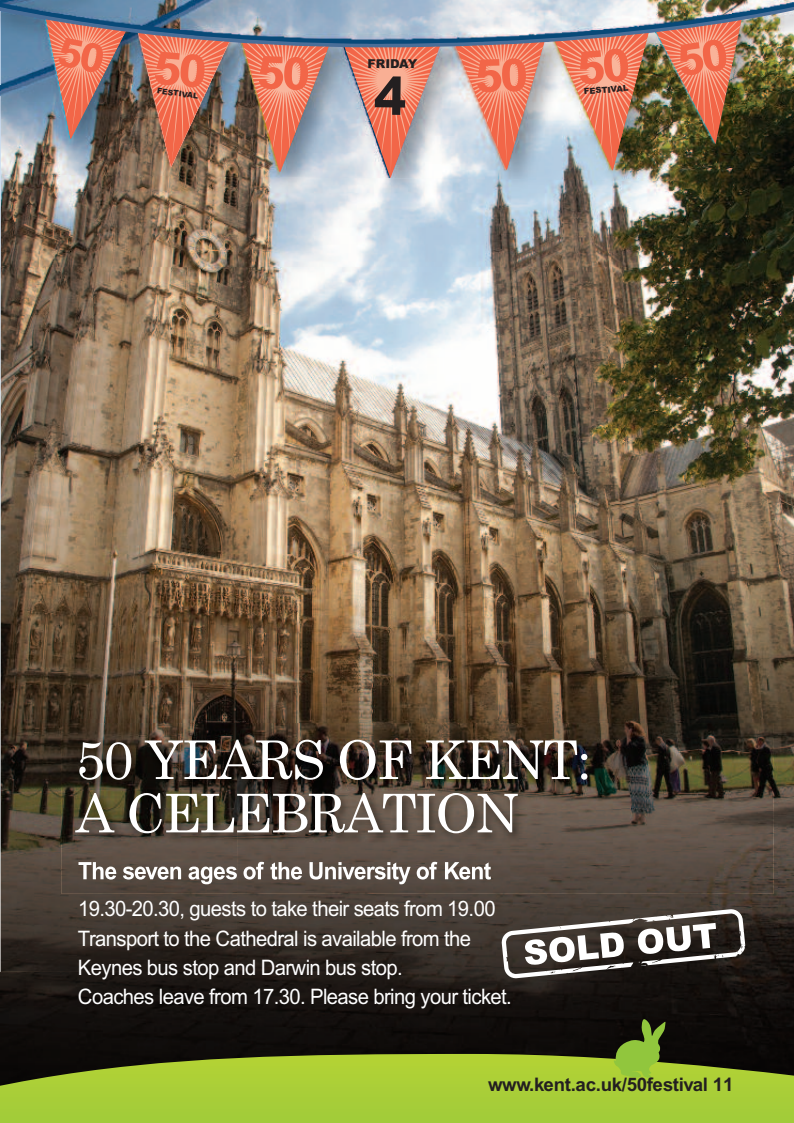
50

FRIDAY

4

SEPTEMBER





50

50  
FESTIVAL

50

FRIDAY  
4

50

50  
FESTIVAL

50

# 50 YEARS OF KENT: A CELEBRATION

**The seven ages of the University of Kent**

19.30-20.30, guests to take their seats from 19.00

Transport to the Cathedral is available from the Keynes bus stop and Darwin bus stop.

Coaches leave from 17.30. Please bring your ticket.

**SOLD OUT**





## Masters' receptions

**Eliot** Est 1965

17.00-18.00 Eliot Dining Hall

**Rutherford** Est 1966

17.00-18.00 Rutherford Dining Hall

**Keynes** Est 1968

17.00-18.00 Keynes Atrium

**Darwin** Est 1970 **and Woolf** Est 2008

17.00-18.00 Woolf Foyer



## Curry and comedy night

Have dinner and a giggle with your fellow alumni. Featuring stand-up comedy from Angela Barnes and Joel Dommett.  
21.00-23.00 Gulbenkian



## Canterbury Sound gig

The new Canterbury Sound: Jack Hues and the Quartet, and The Boot Lagoon, featuring a performance of Soft Machine's 'Facelift,' with a special guest appearance from original member Brian Hopper.  
20.00-21.30 Dolche Vita garden, Keynes





## Stacey Symposium

### Biosciences at Kent: The next 50 years

11.00-12.00 Tours of the School

12.00-13.30 Buffet reception

13.30-13.40 Introduction

13.40-15.00 Session 1: Microbiology & Infectious Diseases

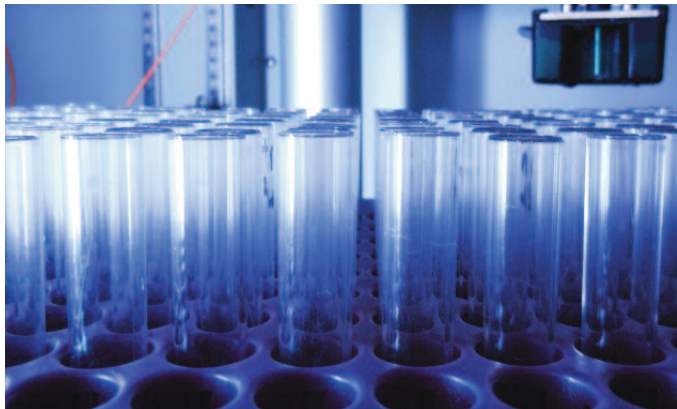
15.20-15.50 Tea/coffee

15.50-17.10 Session 2: Biomedical Sciences

17.30-18.00 Session 3: The future

18.00-19.00 Reception

Stacey Building



50

50  
FESTIVAL

50

50  
FESTIVAL

50

50  
FESTIVAL

50

SATURDAY

5

SEPTEMBER



50

50  
FESTIVAL

50

SATURDAY

5

50

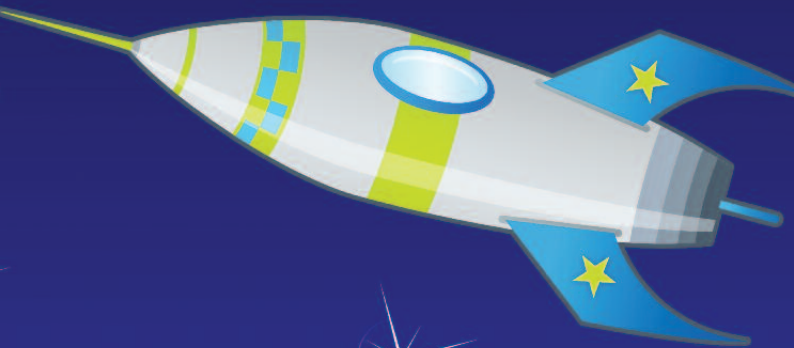
50  
FESTIVAL

50

## Rocket-building workshop

It is rocket science! Rise to the School of Physical Sciences' challenge of launching a hen's egg payload into space (actually just a hundred or so metres) and recovering it undamaged. With help from our resident space scientists you will design, build and launch a black-powder-powered rocket. Once you have built your rocket you will be assigned a launch time and then comes the countdown. Scrambled eggs anyone?

Lab opens at 10.00 (last entry 13.30), launches outside from 15.00 to 17.00  
Ingram Lab 4





## Fun for all



### Graduation gown selfies

Robe up and share your photos with us at #50Fest

All day, Senate lawn

### Family fun zone and picnic area

All day, Darwin Rose Garden

### Language bitesize

Learn Japanese or Mandarin in this fun 30-min class with the Centre for English and World Languages.

10.00-12.00 Keynes Senior Common Room



### Print-making workshop

Be inspired by the exhibition in Studio 3. Children can create a colourful print work using cut fruit and vegetables.

10.00-12.00 Jarman Mezzanine, Age: 5yrs+ (Limited spaces)

### Understanding our woodland

Discover the wonderful wildlife on our campus.

10.00-12.00 Meet at Marlowe Foyer





### The Big Draw

Children can be as creative as they like and see their work exhibited all weekend! Prizes will be awarded. Drop in 10.00-13.30 Jarman Studio 1

### Light graffiti booth

Use light emitting diodes (LEDs), batteries and your imagination to produce beautiful images by taking long exposure photos with a digital camera. The School of Physical Sciences will teach you some of the amazing properties of light; you can take away a pack of LEDs to try it yourself at home!

Drop in 10.00-16.00 Ingram Lab 3 dark rooms



### What would you look like as a caveman or cavewoman?

Researchers in the School of Anthropology and Conservation will take a surface scan of your face and show you what you would have looked like as a Neanderthal 200,000-300,000 years ago. You can even take a picture home to show your friends and family!

Drop in 10.00-16.00 Matt Skinner's Lab (room 114), Marlowe

### Terrific topology

How many holes does a doughnut have? Find out using play dough.

Drop in 10.00-16.00 Ingram Lab 3





## Fun for all



### Exquisite equations

Find out how perfect you are with a few simple measurements!

Drop in 10.00-16.00 Ingram Lab 3

### Creative chromatography

You may have done paper chromatography but have you tried it with chalk?

Drop in 10.00-16.00 Ingram Lab 3

### Fascinating forensics

Find out whodunnit with our fingerprinting challenges.

Drop in 10.00-16.00 Ingram Lab 3



### Open mic

Read your poetry or published works, give a talk or take to the stage to discuss a matter of interest. The floor is yours!

Drop in 10.00-18.00

Central marquee

### Lab demonstrations

Come and see demonstrations of the School of Psychology's lab equipment.

11.00-12.00 and 13.00-15.00

Keynes Lecture Theatre 4





### **Interactive storytelling**

Join the Drama Department and Wide Eyed Theatre Company for a morning of interactive storytelling.  
11.00-12.00 Gulbenkian Café stage

### **Sea Story**

Tall Tales Big Moves combine dance, storytelling, and music broadcast through their very own 'pirate' radio station. Expect storms, shipwrecks, mermaids, jellyfish and a very curious sea creature.

11.00, 13.00 and 15.00 Gulbenkian Theatre



### **Live research**

Participate in the School of Psychology's research, exploring social psychological aspects of group and intergroup relations, human behaviour, society and technological developments. You can also find out how children learn language, conversation and social conventions.

12.00-13.00 Keynes Lecture Theatre 4

### **An economic choice experiment**

No prior knowledge is needed for this experiment. You can proceed at your own pace but it should take around 10-20 minutes.

Drop in 12.00-15.00 Keynes Seminar Room 4, Age: 12yrs+



50

50  
FESTIVAL

50

SATURDAY

5

50

50  
FESTIVAL

50

## Fun for all



### Duck cam

The School of Engineering and Digital Arts' radio controlled, self-propelled model duck will give you a different perspective and insight into life as a duck!

Drop in 12.00-16.00 Jennison Duck pond

### Defeat SPECTRA

This immersive activity is themed around thwarting a super villain by cracking his secret code and destroying the computer control centre of the sinister SPECTRA Corporation!

Drop in 12.00-16.00 Jennison marquee



### Humanoid robots

Come and meet our NAO humanoid robots, they are interactive, autonomous and fully programmable. They can see, hear, speak, feel and communicate, as well as sense and avoid obstacles.

Drop in 12.00-16.00 MEng Lab (G46), Jennison

### Amateur radio station

Find out how to use radio equipment to make contact with distant radio users around the world and learn about the development of radio from analogue to digital.

Drop in 12.00-16.00 Engineering Lab (G30), Jennison



### **Virtual reality tour**

Experience the School of Engineering and Digital Arts through the medium of virtual reality.

Drop in 12.00-16.00 MEng Lab (G46), Jennison

### **Basket making**

Learn how to use coppiced materials to produce a simple basket at the School of Anthropology and Conservation. You will need to wear sturdy footwear and work clothes!

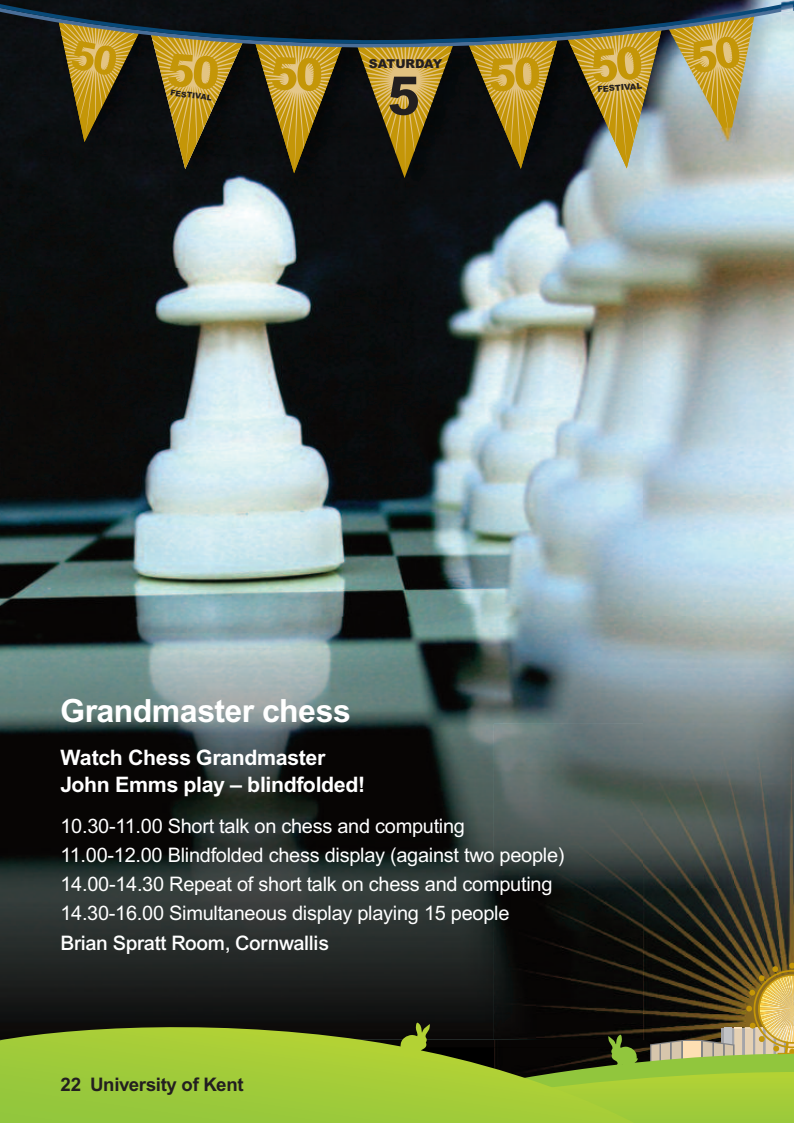
13.00-16.00 Meet at Kent Business School (Limited spaces)

## **Goldstein Paris to Canterbury ride**

In memory of the late Professor Goldstein, nine members of staff are riding from our Paris centre to the Canterbury campus! Come and watch as they arrive in Canterbury.

14.00-14.30 Jarman Plaza





## Grandmaster chess

**Watch Chess Grandmaster  
John Emms play – blindfolded!**

10.30-11.00 Short talk on chess and computing

11.00-12.00 Blindfolded chess display (against two people)

14.00-14.30 Repeat of short talk on chess and computing

14.30-16.00 Simultaneous display playing 15 people

Brian Spratt Room, Cornwallis

50

50  
FESTIVAL

50

SATURDAY

5

50

50  
FESTIVAL

50

# We are Kent

My name is Dan Simpson (Rutherford, 2005) and I will be crowdsourcing a poem during the 50th Festival to celebrate Kent's 50th anniversary. I will cut up and combine words submitted online and by festival-goers to create a poem by and for the people who took part.

I will be walking around the campus throughout the weekend and asking you to take part. Tweet your words to @dansimpson using #WeAreKentPoem

The first reading of the poem will take place at the gala dinners on Saturday evening. See page 38!



## Meet me on Friday 4 September

17.00-17.45 Masters' receptions in Eliot and Rutherford

18.30-19.15 Before the Cathedral event at 19.30

## Meet me on Saturday 5 September

13.00-14.00 Central marquee

15.00-15.30 Rutherford Senior Common Room

50

50  
FESTIVAL

50

SATURDAY

5

50

50  
FESTIVAL

50

## Inspiring speakers

### **School of Psychology: 'Past, present and future'**

Dr David Wilkinson will give an overview of the history of the department, its successful research, achievements and plans for the future.

10.00-11.00 Keynes Lecture  
Theatre 4

### **Centre for Professional Practice**

Professor Richard Cheston on the role of fear of the loss of control marker in psychotherapy.

10.00-12.00 Research &  
Development Centre, room 102

### **Panel discussion: The University's first year**

This discussion will be chaired by Professor David Ormrod, co-chair of the University's Former Staff Association, and will feature a panel of founding staff members.

Both former staff and students are welcome to attend.

11.00-12.00 Keynes Lecture  
Theatre 1

### **Fifty years of campus design**

This School of Architecture lecture by Dr Gerald Adler examines key buildings on the Canterbury campus, and demonstrates how they exemplify the architecture of the British New Universities that stand, more generally, for the changing character of buildings in the UK.

11.00-12.00 Marlowe Lecture  
Theatre 1

### **Are women more ethical than men?**

Come along and participate in this debate on the contentious but stimulating topic of gender and ethics in business.

11.00-12.00 Kent Business School



50

50  
FESTIVAL

50

SATURDAY

5

50

50  
FESTIVAL

50

### **Creating competitive advantage through management science**

Find out about the 'science' behind how successful organisations interpret data to inform their strategic planning and operations.

11.00-12.00 Kent Business School

### **How can the high street survive, and thrive, in the face of the online revolution?**

With Capgemini reporting UK online sales of over £100 billion in 2014, where does this leave the UK high street? Join us for a lively debate.

12.00-13.00 Kent Business School

### **School of Physical Sciences: 'Past, present and future'**

Join us back in our original building (now called Marlowe) for a special presentation on the development of the department over the years.

13.00-14.00 Marlowe Lecture Theatre 1

### **School of History lecture: Gateways to the First World War**

Professor Mark Connelly talks about his latest WW1 research and work on the 'Gateways to the First World War' project.

13.00-15.00 Gulbenkian Cinema

### **School of English: "On Margate Sands...": writers and painters in Thanet.**

Lecture by Emeritus Professor Rod Edmond. The lecture will be followed by a drinks reception in the Rutherford Cameron Gardens at 15.00.

14.00-16.00 Rutherford Lecture Theatre 1



50

50  
FESTIVAL

50

SATURDAY

5

50

50  
FESTIVAL

50

## Inspiring speakers (continued)

### **Keeping the House of Commons cool**

Dr Henrik Schoenefeldt presents his new research, which reveals how Victorian scientists developed the House of Commons' historic ventilation system, following a process that was not only concerned with technical questions but was also highly political.

14.00-15.00 Marlowe Lecture Theatre 1

### **School of Engineering and Digital Arts subject talks**

Discover the variety of courses on offer in the School of Engineering and Digital Arts (EDA). Find out what exciting things the School is up to from Dr Richard Guest, Director of Admissions in EDA.

14.00-15.00 Jennison Lecture Theatre

### **Tizard Centre: 'Down's syndrome – a 50-year follow-up study'**

A 50-year longitudinal follow-up study of the lives of children with Down's syndrome, presented by Dr Janet Carr. The lecture will be followed by a reception in Eliot Cloister Garden at 15.00.

14.00-16.00 Eliot Lecture Theatre 2

### **Fifty years of Economics and the joy of working with students**

Professor Tony Thirlwall looks back at 50 years of Economics at Kent. Highlights will include funny things that students have said in exams and essays over the years.

11.00-12.00 Keynes Lecture Theatre 3



### **Per Incuriam: looking at 40 years of legal mis-education**

This joint guest lecture by two of Kent Law School's Emeritus Professors offers a fascinating and entertaining insight into 40 years of critical legal education at Kent; Professor Wade Mansell and Professor Steve Uglow will reflect on their many and varied experiences of teaching law students.

16.00-17.00 Eliot Lecture Theatre 2

### **School of Engineering and Digital Arts: 'To err is human, to forgive divine, to check is engineering'**

The Right Reverend Dr Tom Butler will fondly recall his time at the University of Kent where he was a Lecturer in Electronics and a University Chaplain.

16.00-18.00 (Limited spaces)  
Jennison Lecture Theatre

### **Centre for Professional Practice**

A celebration of the School's Counselling and Psychotherapy programmes, including an exhibition of photographs taken by students and alumni which capture an aspect of training or practice on the theme of 'Happiness in the Workplace'.

10.00-18.00 Research & Development Centre, room 102

### **Interdisciplinary Kent**

The Gulbenkian Cinema will host the screening of three short films produced for the 'Interdisciplinary Kent' 50th anniversary project. The audience will then be invited to join in a debate on some of the topics raised by the films.

15.00-17.00 Gulbenkian Cinema



50

50  
FESTIVAL

50

SATURDAY

5

50

50  
FESTIVAL

50

## Exhibitions and tours

Our schools and colleges are opening their doors, enabling you to take a tour of their facilities. Find out more about their fascinating research, delve into their rich history and meet with current staff and students.

### Beacon Projects

Come and find out about the 12 Beacon Projects, created to celebrate the 50th anniversary and leave an ongoing legacy.

Saturday 10.00-18.00

Sunday 10.00-16.00 Marlowe Foyer

**Photography exhibition** by University photographer Matt Wilson  
09.00-17.00 Colyer-Fergusson first floor gallery

**Kent School of Architecture tours**  
10.00-18.00 Marlowe Foyer

**School of Social Policy, Sociology and Social Research exhibition**  
10.30-15.00 Darwin Conference Suite

**Kent Law School through the ages**  
16.00-18.00 Eliot Extension 7-9 and the Brian Simpson room

### School of Psychology lab tours with demonstrations

11.00-12.00 and 14.00 and 15.00

Tours will start from KLT4 and are led by our current students. There will also be an exhibition in Keynes Atrium from 12.00-13.00

### 50 Farmers' Tales

10.00-18.00 School of Anthropology and Conservation foyer (to the right of the Marlowe Building)

### School of Engineering and Digital Arts Open labs

12.00-16.00 Jennison

### School of Computing

See a timeline of the development of Computing at Kent  
10.00-18.00 Cornwallis

**School of Physical Sciences**  
10.00-18.00 Marlowe Foyer

**School of Biosciences laboratory tours** 10.00-13.00 Stacey

**School of European Culture and Languages wine tasting reception**  
16.30-18.00 SECL Atrium, Cornwallis North West

### School of Engineering and Digital Arts

Meet our student societies  
17.00-18.00 Jennison social area



## In depth

### **Marvellous mathematics: 50 years of Kent and solitons**

12.30-13.00 A wave called Soliton and its discovery

13.00-13.30 Making waves with maths

13.30-15.00 Coffee break and a chance for visitors to talk to staff, students and supervisors

15.00-15.30 Topology: A story of doughnuts, power lines and the London Underground

15.30-16.00 Solitons: From Edinburgh Canal to the Large Hadron Collider

Keynes Lecture Theatre 2



### **School of Politics and International Relations: Celebration conference**

The Politics@Kent conference will gather alumni, students, current and emeritus staff in an afternoon of debate and lectures on the most pressing issues facing the field of politics and international relations today.

14.00-15.00 Research presentations

15.00-15.30 'Russia in the Putin era', Professor Richard Sakwa

15.30-16.30 Doctoral candidates present their research projects

16.00-17.00 The main debate: "In or out? EU Referendum panel"

Keynes Lecture Theatre 5 and seminar rooms 12 and 14-17



50

50  
FESTIVAL

50

SATURDAY

5

50

50  
FESTIVAL

50

## Sex and drugs and IVF

**A day of education and inspiration brought to you by the Centre for Interdisciplinary Studies of Reproduction (CISoR)**

The Madness of King George –  
Professor Martin Warren, Head of  
School of Biosciences

10.30-11.15 Woolf Lecture Theatre 1

**Café Scientifique: An evolutionary sex education lesson** – Dr Sarah Johns, School of Anthropology and Conservation

11.15-12.00 Woolf Café

**Born queer and does it matter**  
– Qazi Rahman, Senior Lecturer in  
Cognitive Neuropsychology, Academy  
of Sex Research, Kings College London

12.00-12.45 Woolf Lecture  
Theatre 1

**Café Scientifique: Three parent IVF**  
– Sarah Norcross, Director of Progress  
Educational Trust

13.45-14.30 Woolf Café

25 years of designer babies –  
Professor Darren Griffin, University  
of Kent

14.30-15.15 Woolf Lecture Theatre 1

### Exhibitions

#### Artists in residence

An exhibition of work by Annie Halliday, artist in residence at the School of Biosciences 2008-2009, featuring images of live cells obtained using state-of-the-art microscopes and laboratory photographs using pinhole cameras.

All day, Woolf Seminar Room 1

#### Art in A.R.T (Assisted Reproduction Technologies)

Featuring work by Gina Glover (co-founder, London's Photofusion Photography Centre), ranging from playful explorations of the biomedical sciences to long-term studies of the impact of human conflict.

All day, Woolf Seminar Room 2

50

50  
FESTIVAL

50

SATURDAY

5

50

50  
FESTIVAL

50

## Lab rejects

This mini exhibition curated by Dr Dan Lloyd will celebrate 'ancient scientific instruments'. Including examples from the School of Biosciences at the University of Kent, the display mines the recent history of a series of instruments to explore their use, and understand the technological advances that have rendered them *lab rejects*.

All day, Woolf Seminar Room 3

## Younome

This unique science-art collaboration, led by artist Keith Robinson, features 25 self-portraits, each representing the 24 human chromosomes (plus mitochondrial DNA), to showcase 'personalised genomics'. We can now create digital self-portraits from a photograph to generate a personalised genome. Guests will be able to order their own!

All day, Woolf Seminar Room 4

## IVF lab

Did you know 1 in 50 babies are conceived through IVF in the UK? This is your chance to find out what goes on inside an IVF lab! With the help of the London Women's Clinic we have created an 'IVF experience' to give you an insight into life as a clinical embryologist.

All day, Woolf Seminar Room 5

## DNA lab

Learn about yourself at the most basic level – the human cell! Visit our pop-up genetics laboratory to have some fun with hands-on biology.

All day, Woolf Seminar Room 6

Don't miss the chance to say hello to some of the animals that we study, play a sperm-tossing game (a game for all the family!) and check out a research exhibition.

50

50  
FESTIVAL

50

SATURDAY

5

50

50  
FESTIVAL

50

PROJECT



Supporting the future of student sport at Kent

## Sport

These activities are free to attend. Some have a maximum number of participants and will be available on a first-come, first-served basis. Staff at reception will be on hand to help.

### Breakfast body pump 16yrs+

09.00-09.45, Studio 1, Sports Centre

**Table tennis** all ages  
10.00-11.00, Hall 1, Courts 1-2, Sports Centre

**Badminton** all ages  
10.00-11.00, Hall 1, Courts 3-4, Sports Centre

**Volleyball** 18yrs+  
10.00-12.00, Hall 1, Courts 5-8, Sports Centre

### Time tunnel spinning

14yrs+  
10.00-10.45, Studio 1, Sports Centre

**Kids' drums alive**  
7yrs+ 10.00-10.45, Studio 2, Sports Centre

**Kids' football** 7yrs+  
10.00-11.00, 3G pitch, Pavilion

**Treasure hunt** all ages  
11.00-12.00, Meet at the Sports Centre

**Petanque** 10yrs+  
11.00-12.00, Grass field, Pavilion

**Zumba** 16yrs+ 11.15-12.00, Studio 1, Sports Centre

**Basketball** 18yrs+  
13.00-14.00, Hall 1, Courts 1-4, Sports Centre

**Kids' zumbatronic**  
16yrs & below  
13.00-13.45, Hall 2, Sports Centre

### Stretch tone and relax

16yrs+  
13.00-13.45, Studio 1, Sports Centre

**Bubble football** 18yrs+  
13.00-14.00, 3G, Pavilion

**Kwik cricket** 7yrs+  
13.00-14.00, Astro, Pavilion

**Bat and trap** 7yrs+  
13.00-14.00, Grass field, Pavilion

**Bubble football** 18yrs+  
14.00-15.00, 3G pitch, Pavilion

**Kwik cricket** 7yrs+  
14.00-15.00, Astro, Pavilion

**Cheerobics** all ages  
14.15-15.00, Hall 2, Sports Centre



50

50  
FESTIVAL

50

SATURDAY

5

50

50  
FESTIVAL

50

## Film festival

### Lupino Cinema

The top 5 greatest films of all time

5th: *The Godfather* (18) 09.00

4th: *Shaun of the Dead* (15) 12.00

3rd: *Fight Club* (18) 13.40

2nd: *Pan's Labyrinth* (15) 16.00

1st: *Forrest Gump* (12A) 18:00

Free to attend and there will be plenty of popcorn!



### Gulbenkian Cinema

#### *Home*

When Oh, a loveable misfit from another planet, lands on Earth and finds himself on the run from his own people, he forms an unlikely



friendship with an adventurous girl named Tip who is on a quest of her own.

10.30 Gulbenkian Cinema

#### *45 Years*

Andrew Haigh's follow-up to his ecstatically received *Weekend* has been getting fantastic reviews. It stars Charlotte Rampling and Tom Courtenay as a married couple about to celebrate their 45th wedding anniversary.

18.30 Gulbenkian Cinema

Tickets can be purchased at the Gulbenkian box office.

50

50  
FESTIVAL

50

SATURDAY  
5

50

50  
FESTIVAL

50

## Live music – Keynestock Revisited

Keynestock Revisited at the 50th Festival will see veteran acts return and new acts take to the stage, with an afternoon of music in Keynes College.

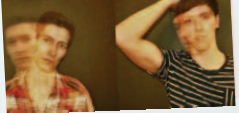
12.00-17.00 Dolche Vita garden, Keynes



Adrian Benn



Lucy Kitt



History of the Trade



Stranded at the Jivin'



The Ramshackle  
Music Collective

50

50  
FESTIVAL

50

SATURDAY

5

50

50  
FESTIVAL

50



## Live music – Kent Unplugged

The Senate stage will host live music from some great artists on Saturday afternoon.

12.00-17.00 Senate stage



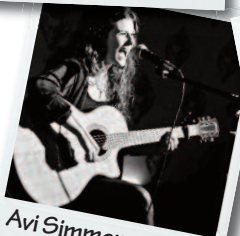
Paul & Claire



Estée Blu



Richard Navarro



Avi Simmons



Emily Watts



50

50  
FESTIVAL

50

SATURDAY

5

50

50  
FESTIVAL

50

## Evening entertainment

### Stand-up comedy show

20.00 Gulbenkian (18yrs+)

Enjoy live stand-up comedy by some of Kent's funniest alumni who have gone on to become professional comedians, including Laura Lexx, Carrie Hodgson, Ben Ridge, Gemma Purdie and Freddy Waller. The evening will be hosted by our very own Ollly Double.

### A student's night out

18.30-21.20 Woody's (18yrs+) and Origins

Spend Saturday evening in one of our student bars. Get down to Woody's for some great live music from The Barmines, Adrian Benn and Lucy Kitt. Or for a more chilled-out evening, head to Origins to listen to Two Blue, bringing you some classic tunes from the 1920s through to the 1960s! Please bring your 50th Festival lanyard to gain entry.

50

50  
FESTIVAL

50

SATURDAY

5

50

50  
FESTIVAL

50

### Pub Quiz

19.30 Dolche Vita

A light-hearted and quirky current affairs quiz run by the School of Politics and International Relations, with exciting prizes! Come as a group of up to six or on your own (staff and students will be on hand to form teams) and test your general and University of Kent knowledge while you make new friends and reconnect with old ones. Open to all.

### Fireworks

21.30 Senate lawn

A spectacular fireworks display will take place on the Eliot and Rutherford slopes to celebrate the end of our 50th anniversary year.



## Gala dinners

Ticket holders only

Join us for a formal dinner in the dining halls of our two founding colleges – Eliot and Rutherford – from 18.30, to celebrate 50 years and raise a toast to our University!

18.30 Eliot and Rutherford

**SOLD OUT**



## Back with a VEN-geance!

Ticket holders only

Dance through the decades and enjoy some of the chart-topping hits of the past 50 years in The Venue, the University of Kent's nightclub. This party is exclusively for alumni, their friends and family and is the perfect chance to relive those student disco days. **This event is for over 18s only**

22.30 The Venue



50

50  
FESTIVAL

50

50  
FESTIVAL

50

50  
FESTIVAL

50

SUNDAY

6

SEPTEMBER





50

50  
FESTIVAL

50

SUNDAY

6

50

50  
FESTIVAL

50

## Kent QI screening

In February 2015, the University hosted a one-off special edition of QI in aid of the Kent Opportunity Fund. This is your chance to see what happened when Sandi Toksvig, Jo Brand, Alan Davies, Phill Jupitus and Harry Hill took to the stage.

11.30-12.30

Gulbenkian Theatre

Free to attend but donations to the Kent Opportunity Fund welcome



50

50  
FESTIVAL

50

SUNDAY  
6

50

50  
FESTIVAL

50

## Fun for all



### 'We are Kent' photo

Join us on the Senate lawn for a commemorative group photo with your fellow 50th Festival-goers.

13.00-14.00 Senate lawn

### What would you look like as a caveman or cavewoman?

Researchers in the School of Anthropology and Conservation will take a surface scan of your face and show you what you would have looked like as a Neanderthal 200,000-300,000 years ago. You can even take a picture home to show your friends and family!

Drop in 10.00-16.00 Matt Skinner's Lab (room 114), Marlowe



### Open mic

Read your poetry or published works, give a talk or take to the stage to discuss a matter of interest. The floor is yours!

Drop in 10.00-18.00 Central marquee

### The International Story Quest

This playful and lively experience from Knuckle & Joint includes beautiful puppetry, clowning and lots of tales told by two not-so-official government officials.

11.00-12.00 Gulbenkian Café stage

### Eliot Chapel open house

A chance to visit the newly refurbished Eliot Chapel for drinks and refreshments

11.00-12.30 Eliot Chapel

50

50  
FESTIVAL

50

SUNDAY

6

50

50  
FESTIVAL

50

## Footsteps

As part of the University's 50th anniversary celebrations, students, staff, alumni and the wider University community have become part of the very fabric of Kent by having a short message or memory engraved on a brick, and set in our new celebratory pathway by the Templeman Library.

The Crab & Winkle Path commemorates the Canterbury and Whitstable Railway route (known locally as the Crab & Winkle Line), which ran directly below this part of the University grounds. Set at the heart of the Canterbury campus, this new path recognises many of those who have made the University what it is today.

All funds raised have helped build the Kent Opportunity Fund, which supports students at Kent by funding scholarships, student projects and bursaries.

The Project will run until November 2015, so there is still time to take part! Minimum donations are £50 for a two line brick, and £90 for a four line brick. Join us, and help the next generation of Kent students to walk in your footsteps.

To find out how you can become involved, visit [www.kent.ac.uk/footsteps](http://www.kent.ac.uk/footsteps) or email [50years@kent.ac.uk](mailto:50years@kent.ac.uk)



The path will officially be opened at a ceremony hosted by the Vice-Chancellor. The ceremony will be followed by refreshments.

10.30-12.00 Crab & Winkle Path

50

50  
FESTIVAL

50

SUNDAY

6

50

50  
FESTIVAL

50

## School of Arts – History of Arts

*Stuckism: Remodernising the Mainstream.* Students from our MA in Curating course have organised this event and will be running tours throughout the day.

Sunday 13.00-16.00 Studio 3, Jarman

## Sport

These activities are free to attend. Some have a maximum number of participants and will be available on a first-come, first-served basis. Staff at reception will be on hand to help.

**Table tennis** all ages  
10.00-11.00, Hall 1,  
Courts 1-2, Sports  
Centre

**Badminton** all ages  
10.00-11.00, Hall 1,  
Courts 3-4, Sports  
Centre



**Circuits/HIIT class**  
16yrs+ 10.00-10.45,  
Studio, Sports Centre

**Kids' tennis** 5yrs+  
10.00-12.00, Indoor  
tennis courts, Pavilion

**Tennis** – grab  
a group of friends  
and play tennis!  
10.00-12.00, Indoor &  
outdoor tennis courts,  
Pavilion

**Athlefit** all ages  
10.15-11.00, Hall 2,  
Sports Centre

**Seated volleyball**  
all ages  
11.15-12.00, Hall 2,  
Sports Centre

**Spinning** 14yrs+  
11.15-12.00, Studio,  
Sports Centre

**Pilates** 16yrs+  
13.00-13.45, Studio,  
Sports Centre

**Basketball** 18yrs+  
13.00-14.00, Hall 1,  
Courts 5-8, Sports  
Centre

**Kids' sports day** 5yrs+  
13.00-15.00, Hall 2,  
Sports Centre

**Yoga** 16yrs+  
14.15-15.00, Studio,  
Sports Centre

50

50  
FESTIVAL

50

SUNDAY

6

50

50  
FESTIVAL

50

## Music and film

### Discover music at Kent

Visit the award-winning Colyer-Fergusson Music Building and admire our wonderful music-making facilities. You might even hear a tune or two!

All day, Colyer-Fergusson



### Lupino Cinema

The greatest children's films of all time!

3rd: *Harry Potter and the Philosopher's Stone* (PG) 10.00

2nd: *Finding Nemo* (U) 12.30

1st: *Toy Story* (U) 14.30

Free to attend and there will be plenty of popcorn!

### Gulbenkian Cinema

*Othello* – Live from the Royal Shakespeare Company

14.30

*45 Years*

Andrew's Haigh's film stars Charlotte Rampling and Tom Courtenay.

18.45

Tickets can be purchased at the Gulbenkian box office.

# EAT AND DRINK

## **Dolche Vita – Keynes**

Friday 10.00-16.00  
(kitchen open 12.00-15.00)  
Saturday 09.00-21.00  
(kitchen open 12.00-15.00)  
Sunday 10.00-16.00  
(kitchen closed)

## **K Bar – Keynes**

Friday 12.00-23.00  
Saturday 12.00-23.00  
Sunday 12.00-23.00

## **Gulbenkian**

Friday 10.00-22.00  
(curry and comedy menu  
only 20.00-22.00)  
Saturday 09.00-21.00  
Sunday 09.00-17.00

## **Origins – Darwin**

Friday 10.00-23.00 (kitchen  
open 12.00-21.00)  
Saturday 10.00-23.00  
(kitchen open 12.00-21.00)  
Sunday 10.00-17.00  
(kitchen open 12.00-16.30)

## **Woody's – Park Wood**

Friday 17.00-midnight  
Saturday 12.00-midnight  
Sunday closed

## **Rutherford Dining Hall**

Friday 07.45-09.30,  
12.00-13.45, 18.00-19.30  
Saturday 07.00-09.30  
Sunday 07.00-09.30,  
12.00-13.45, 18.00-19.30

## **Mungo's – Eliot**

Friday 10.00-23.00  
Saturday 10.00-23.00  
Sunday closed

## **Create Café – Marlowe Building**

Friday 09.00-15.00

## **Takeaway food – Senate lawn**

Saturday 11.30-17.00  
Sunday 10.00-14.00

## **Campus shops**

### **Essentials**

Friday 07.00-22.00  
Saturday 09.00-22.00  
Sunday 09.00-22.00

### **Park Wood Essentials**

Friday 08.00-20.00  
Saturday 10.00-16.00  
Sunday 10.00-16.00

## **International food stalls**

Experience cuisine  
from around the world,  
right here in Kent.  
Saturday 11.00-16.00  
Jarman plaza



## **Produced in Kent**

A selection of local  
makers offering  
a wide range of  
regional food and  
drink.

Saturday  
11.00-16.00  
Senate lawn





# OTHER USEFUL INFORMATION



- Baby-changing facilities are located in the Gulbenkian, the Colyer-Fergusson Music Building and the Pavilion.
- You can find information points at the central marquee and in Keynes Atrium.
- ATMs on campus are indicated on the supplied map.
- Catch the Unibus to and from Canterbury city centre. Timetables are available from the information points.
- On-campus parking is clearly marked and is free on Saturday and Sunday. Accessible parking bays are available for Government Blue Badge holders.
- Some academic schools have prepared individual programmes for their events. They will be distributed at each event.
- Campus security can be contacted on 01227 823300.
- If you need help accessing any building on campus or need a map with wheelchair access routes, please visit one of our information points or ask a member of staff.
- Please pay attention to all warnings when on campus and take special care if touring our laboratories.
- In case of emergency, please follow the advice of event stewards.
- If you are bringing children with you, please ensure that they are supervised at all times.
- Lost children and lost property will be looked after at the information points.
- Trained first aiders will be on site throughout the weekend.

**Friday Prayers at the Mosque** 12.45 The Mosque, Giles Lane – also open for daily prayer throughout the weekend

**Sunday Church of England Service** 09.00 Eliot Chapel

**Sunday Catholic Mass** 10.00 Franciscan Study Centre, Giles Lane



50

1965-2015  
THE UK'S  
EUROPEAN  
UNIVERSITY



# I am Kent